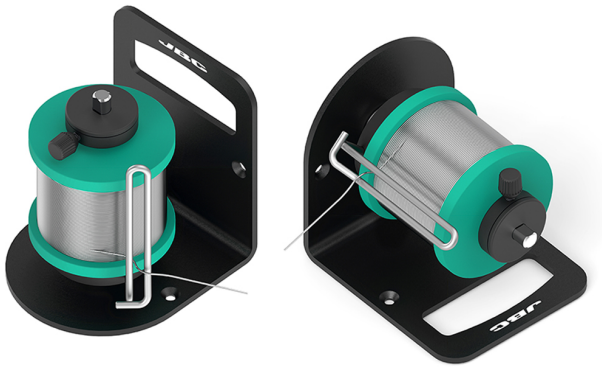


for Solder Reel



The Solder Reel Stand is the ideal solution for easy solder wire supply. It can be placed in two positions to suit your working needs.

It comes with a reel braking system. The resistance of the wire pulling can be modified increasing or decreasing the compression of the spring roll.

The mounting holes allow fixing the Solder Reel Stand at the workplace.

Solder coil is not included.

**Don't believe us...
TRY IT!**



REFERENCE

BE-SB

PRODUCT COMPOSITION

1 BES Stand for Solder Reel

SPECIFICATIONS

Weight 0.8 kg / 1.76 lb

COMPATIBLE SOLDER REEL

weight: up to 2 kg / 4.4 lb
diameter: max. 80 mm / 3.15 in
height max. 80 mm / 3.15 in
height min. 25 mm / 1 in
stand axis: Ø 10 mm / Ø 0.4 in

WEIGHT AND DIMENSIONS

813 gr (1.79 lb)

952 gr (2.10 lb)

228 x 120 x 115 mm